



Mesa Community College

2024-2025 CAMPUS DEMOCRATIC ENGAGEMENT ACTION PLAN

Strategies to Increase Student Participation in Democracy and Student Voter Engagement Preparing Students to Become Engaged Civic Leaders

For the Southern & Dobson and Red Mountain Campuses
Submitted by: Center for Community & Civic Engagement (CCCE)



**MESA
COMMUNITY COLLEGE**

A MARICOPA COMMUNITY COLLEGE

Table of Contents

Table of Contents

Executive Summary	3
Leadership	4
Commitment	8
Student Learning Outcomes	9
Integration of Democratic Engagement in Curriculum & Co-Curriculum	11
Community and National Collaboration & Partnership	13
Landscape	14
Goals	17
Strategy	19
Strategy	23
Reporting	26
Evaluation	27

2024 - 2025
CAMPUS DEMOCRATIC ENGAGEMENT ACTION PLAN
Mesa Community College
Center for Community & Civic Engagement

Executive Summary

Mesa Community College (MCC) is nationally recognized as an Aspen Prize Top 150 U.S. Community College and is known for service-learning, career and technical programs, civic engagement and innovative approaches to education. The college has served as a resource for career readiness, transfer education, workforce development and lifelong learning throughout its 50-year history. Host to more than 30,000 students annually, MCC offers degree and certificate programs online, at its two campuses, and additional locations. Through Guided Pathways with Integrated Support Services, MCC is transforming the ways it champions student success, college completion, university transfer and career attainment or advancement. MCC is a Hispanic Serving Institution. Its American Indian Institute also serves 22 federally recognized Arizona tribes and more than 30 out-of-state tribes. Additionally, more than 50% of its students are the first in their family to attend college. This diverse student body also includes more than 400 international students representing over 60 countries. The College's award-winning faculty are dedicated to student success, providing the education and training that empowers MCC students to successfully compete in the workforce. Located in the East Valley of central Arizona, MCC is one of 10 colleges in the Maricopa County Community College District.

The Campus Democratic Engagement Action Plan reaffirms the college's commitment to serve the community and prepare students to become engaged civic leaders through strategic pathways designed to increase student participation in local, state, and federal activities that support democracy. In accordance with ARS 15-1895, Mesa Community College's Campus Democratic Engagement Action Plan was developed to continue its commitment and involvement in civic engagement.

This plan was developed by members of the Center for Community & Civic Engagement serving on the Civic Action Council. This council was and continues to be composed of student leaders, faculty, and staff. Members of the Civic Action Council and their community voter outreach partners currently implement the plan.

Additionally, this plan is designed to increase student voter registration and voting in local, county, state, and federal elections. This plan will be administered at MCC's Southern & Dobson and Red Mountain Campuses under the direction of the Center of Community & Civic Engagement (CCCE). This plan aspires to increase civic learning, political engagement and voter participation in meaningful and measurable ways. The plan outlines both short- and long-term goals with strategies that are sustainable and adaptable. The plan will focus on segments of the campus population who have traditionally been under-represented. The Campus Democratic Engagement Action Plan is designed to be reviewed yearly and revised accordingly. The plan also supports MCC's vision statement to "Inspire,

Ensure Access, and Empower Action.” The current Campus Democratic Engagement Action Plan has begun this Fall 2024 and will continue throughout the academic year. The College has collaborated with many organizations, which help develop resources to train faculty and students to expand their ability to support civic engagement.

The college continues to explore new approaches to support its objectives and to utilize the data collected by the National Study of Learning, Voting, and Engagement (NSLVE), as well as to utilize input from faculty and students who are involved in civic engagement projects.

Funding and staff support for the 2024 Campus Democratic Engagement Action Plan is built into the Center for Community & Civic Engagement (CCCE) budget and therefore institutionalized. Additionally, we are in the process of applying for grants to support special projects.

Grants

- Andrew Goodman Foundation
- Ask Every Student Grant
- Vote Early Day
- All IN- Civic Nation
- VoteRiders
- Campus Project

Materials

- Prizes, posters, handouts, buttons – the printing of these items comes from the budgets of Student Life and Leadership and Community & Civic Engagement along with other departments that may help – specifically academic departments.
- Various community partners and Mesa Community College.

Leadership

Permanent institutionalization: The strength of the 2024-2025 Campus Democratic Engagement Action Plan is tied to the vision, mission, and values of Mesa Community College. MCC has supported this plan by providing dedicated college resources, including physical office space and permanent employees, for the past 26 years. Currently the plan administrator is also the director of the Center, Bernice Belmonte. The Center has three board approved positions, including one dedicated to civic engagement, in addition to part-time positions, help support the plans’ programs and services. With 5-12 student work-study positions and approximately 10 student volunteers are recruited each year to focus on civic engagement support for the college and community. Along with 2 students serving as Andrew Goodman Ambassadors, Civic Influencers, 3-4 Campus Vote Fellows, Up to Us team leaders and Service-Learnings Assistants during the fall and spring semesters of 2024-2025.

Furthermore, for 2024-2025, the Center for Community & Civic Engagement works to support MCC's student lead organizations or student projects. Along with the Civic Action Council on Diversity, Equity and Inclusion and their mission of creating an inclusive and vibrant learning community. Providing voter registration opportunities and civic engagement training at college events are a key part of this effort, these resources include partnerships with Veterans Services, International Education, the American Indian Institute, Disability Resources, Friendly Colors (LGBTQ) Student Alliance, and Student Life and Leadership. For the spring, we will be planning partnerships and events with Net Impact and Ed Rising.

Student Leadership: The CCCE implements the Campus Democratic Engagement Action Plan on MCC's campuses. It is dedicated to encouraging civic and servant leadership within the student body. The Center has a history of strong and diverse student involvement. From this student body the center actively recruits students to become leaders within the department from semester to semester and year to year. Activities such as Volunteer Fest, National Voter Registration Day, Voter Education Week, Vote Early Day, Election Hero Day, and other voter engagement events are typically conducted under the guidance of the MCC Votes Team, a committee of the CCCE. This group is composed of the Federal Work Students, Andrew Goodman Ambassadors, Campus Election Engagement Program Civic Influencers, Democracy Fellows, the CCCE staff, and community partners. Team members are selected or recruited from a pool of student leaders either who have expressed an interest in participating or who have been recruited. Each semester team member's work together to develop leadership skills that will benefit event planning and execution. These students are also invited to serve on our Civic Action Council and take an active role in supporting the mission of the CCCE at MCC. While most student volunteers remain for the entire year, some may participate for a single semester or event. Student leadership assignments are collaborative and created on an event-by-event basis.

Faculty Leadership: Faculty have played a key role in the support of civic engagement at Mesa Community College. Participating faculty were instrumental in establishing civic engagement as a student learning outcome in 2014.

Faculty also helped to support the official name change for the center to include "Civic Engagement" in 2015. Most recently, when the new college vision, mission, and values was released, Civic Engagement was not included in this statement. Faculty met with the committee to help incorporate civic engagement back into the Values Statement. This dedication to civic engagement may be traced back nearly thirty years. In 1992, a dedicated full-time faculty position was created to support civic engagement at MCC. This was the faculty director position for the CCCE. This tradition has continued to this day.

Faculty members who have assisted in these endeavors over the years include:

Dr. Brian Dille, Political Science Faculty

Nadine Arroyo Rodriguez, Journalism and News Media Studies Program Director

Margaret Talia White, Student Services Specialist- Senior

Faculty remain consistently involved from semester to semester and lend stability and continuity to programs and signature events over the years. In 2022-2023 15 faculty members served on the Community Engagement Advisory Board. Currently, a new board is in the selection process.

Community Leadership: To date, the college has collaborated with 350 community organizations that support civic engagement and service-learning projects at the local and state level. A few of these organizations include:

- Maricopa County Recorder's Office
- Clean Elections
- City of Mesa
- Mesa Police Department

These partners encourage and support civic engagement efforts by attending campus leadership and educational workshops, participating on the Community Engagement Advisory Board and by serving as keynote speakers at or sponsors for various events. Community partners may also engage and educate potential voters by focusing on the issues that are directly affecting them.

They continue to provide support and resources during registration drives and other related activities. An example of this on the national level can be found in the Arizona Student Voting Summit. Mesa Community College hosted the first Arizona Student Voting Summit in April 2020 with the support of national organizations including the Andrew Goodman Foundation, Campus Election Engagement Program, and ALL IN. MCC will be host again this upcoming September 2024.

In 2020-2021, MCC was selected as one of only 31 colleges and universities to become a member of the Ask Every Student Codesigner Campuses team. This program supports the Campus Democratic Engagement Action Plan at MCC. Participants meet monthly to build this program.

CCCE Support and Team

The following administrators, faculty, staff and students have been compiled, organized, edited, reviewed, supported, and implemented the campus plan:

Center for Community & Civic Engagement

Alejandra Maya - Civic Engagement Program Coordinator, CCCE- coordinates the development and implementation of civic engagement programs at the college.

Dawn M. Rhodes - Service-Learning Program Coordinator, CCCE- coordinates the service-learning program and supports other civic engagement programs at the college.

Andrea Sanchez - Administrative Specialists Senior, CCCE- supports the overall operations of the center at the college.

Emma Thadani - Service Learning Specialist, CCCE, supports service-learning programs at the college.

Administration, Faculty, and Staff

Dennis Mitchell, Ed.D. - Interim Senior Associate Vice President of Academic Affairs

Dr. Leanna Hall - Dean of Arts, Humanities, and Social Sciences

Carol Achs - Dean of Instruction, Mathematics/Computer Science, Sciences, Nursing, & Exercise Science

Michael Voss - Dean of Instruction, Applied Sciences & Technology, Business, CIS, and Justice Studies

Dr. Joanne Russell - Vice President of Student Affairs

Marcy Snitzer - Associate Vice President of Communications, Marketing, & Advancement
Beth Ann Wright - Student Services Manager, Student Life & Leadership
Dawn Zimmer - Media Relations Manager, Institutional Advancement
Megan McGuire - Faculty Senate President, Residential Faculty-Library
Brian Dille, Ph.D. - Residential Faculty, Political Science

Additional Support

Deanna Villanueva-Saucedo - Associate Vice Chancellor of the Center for Excellence in Inclusive Democracy at Maricopa Community Colleges
Terry Mitch - Program Coordinator of the Center for Excellence in Inclusive Democracy at Maricopa Community Colleges
Dr. Steven R. Gonzales – Chancellor

Note: There are other various faculty and staff who donate their expertise.

Civically Engaged Students

Net Impact

Currently in the process of recruiting new members for the school year.

Associated Students of Mesa Community College

Liam Tubman – President at Southern and Dobson, 2024-2025
Seth Whittemore – President at Red Mountain, 2024-2025
Ethan Hammons – Executive Vice President 2024-2025
Luke Hagen – Vice President of Communications 2024-2025
Angela Enriquez – Vice President of Operations 2024-2025
Rudy Sanchez Avila – Maricopa Student Senator 2024-2025
Isabelle Neill – Vice President of Red Mountain 2024-2025
Florian Nguyen – Secretary 2023-2024

Andrew Goodman Ambassadors

Florian Nguyen – 2024-2025
Stephanie Marquez – 2024-2025

MCC Votes Student Organization involvement

Net Impact
Andrew Goodman Ambassadors
Campus Election Engagement Fellow
Campus Vote Project Poll
Phi Theta Kappa Honor Society
Volunteers

Note: Applications will soon open for a new Campus Election Engagement Project Fellow and Campus Vote Project Poll Worker Fellow.

Mesa Community College Divisions

Mesa Community College Library
MCC Veterans Services
American Indian Institute
Student Life and Leadership
International Education

Community Resources

ALL IN Democracy Challenge Andrew Goodman Foundation
Arizona Clean Elections Commission
Ask Every Student (Codesigner)
Arizona Students Association (ASA)
Campus Compact
Campus Engagement Elections Project (CEEP)
Campus Vote Project (created by the Fair Elections Project) Poll Workers'
City of Mesa
Democracy Commitment
League of Women Voters
Maricopa County Recorder's Office
Maricopa County Elections Department
Motivote and MCC Votes Team
Poder Latinx
Public Interest Research Group (pirg.org)
Students Learn Students Vote Coalition (SLSV Coalition)
Unify Challenge College Bowl program

Note: New students are elected/selected for student positions every semester or once the seat is unoccupied. Elections/selections are based on the policies of the club/organizations that student serves under. Students are recruited through flyers or online posts made on canvas, social media, or the intranet. online. Some clubs/organizations recruit through tabling events.

Commitment

Mesa Community College strives to build a reputation for presenting quality programs and implementing responsible and educational civic activities. The college is also committed to building a pervasive culture that promotes the ideals of democracy via civic education and participation as part of its institutional heritage. MCC is fortunate that student voting is important on multiple levels to leadership here at the college. On the classroom level, the faculty members embed and evaluate their classes using Civic Engagement as their Student Learning Outcome.

The college demonstrates their strong support of this mission as civic engagement is introduced to all new faculty during new faculty orientation. Funding is offered by the college in the form of a stipend to the faculty to help them learn how to introduce a civic engagement project into the classroom.

Embedded at the course level, civic engagement is defined as “encompassing actions to promote the quality of life in a community, through both political and non-political processes.” The CCCE assists in designing, implementing, and encouraging student participation in civic engagement events including voter education seminars, issues forums, and democratic roundtable discussions.

Thanks to MCC’s institutional commitment, a culture of civic engagement and democratic participation is readily cultivated on campus. One of the strongest programs that support this culture is the Student Learning Outcomes listed below.

Challenges and Assessment

Transitioning our programs and plans from virtual to in-person events, we are measuring our success in the following ways:

Activities are being tracked for numbers while departments and individuals work together to ensure we are looking at everything that is currently being done and that programs are running smoothly. An assessment of this plan will be formulated drawing from data collected by tracking attendance at various events, a voting summary and report issued by the National Study of Learning, Voting, and Engagement (NSLVE) and data collected from the students. The team to evaluate activities and plan for upcoming semesters will utilize this information. Data will also inform our 2023-2024 Campus Democratic Engagement Action Plan. This document will reaffirm the college’s commitment to serve the community and prepare students to become engaged civic leaders through strategic pathways designed to increase student participation in local, state, and federal activities that support democracy.

Student Learning Outcomes

Student Outcomes Assessment is a term used to describe the measurement and documentation of what Mesa Community College students are achieving in their studies at the college. The faculty also developed the Institutional Student Learning Outcomes that are embedded at the course level. At Mesa Community College, these outcomes are known as “MCC’s 4 Cs” and are consistent with the **Vision, Mission, and Values of the college:**

- **Communication** - The purposeful development, expression, and reception of a message through oral, written, or nonverbal means.
- **Critical Thinking** - The mental process of effectively identifying, determining, gathering, evaluating, and utilizing resources to innovate and/or to accomplish a specific task.
- **Civic Engagement** - Encompasses actions to promote the quality of life in a community, through both political and non-political processes.

- **Cultural and Global Engagement** - Encompasses the awareness of cultural systems, events, and creations and an ability to apply this cultural and global awareness to human interaction and expression.

The Civic Engagement outcome is the most relative pursuant to this action plan. The areas that are used to assess the civic engagement outcome in each college course is based on the following five focus areas:

- **Inclusiveness** - demonstrates an ability to engage respectfully with others in a diverse society
- **Application of knowledge** - Apply the knowledge of one's own study and experiences to active and ethical participation in civic life
- **Demonstration of civic identity and commitment** - Provide evidence of experience in and reflection on civic engagement activities
- **Civic communication** - Communicate and listen to others in order to establish personal and professional relationships to further civic actions
- **Engagement in civic action and reflection**- demonstrate the ability to deliberate and collaborate on issues and problems to achieve a civic aim

Mesa Community College Vision, Mission and Values

The 2020 Mesa Community College Vision, Mission, and Values listed below represent a commitment to civic engagement at Mesa Community and support the Center for Community & Civic Engagement.

Vision: Inspire, ensure access, and empower action

Mission: We create an inclusive and vibrant learning community where everyone is supported to achieve success.

Values:

- **Diversity, Equity, and Inclusion:** Diversity is our greatest asset. We create systems, environments, and interactions that welcome, engage and support all learners.
- **Leadership:** As leaders in our communities, we behave boldly in the face of challenges as we set high expectations, explore new approaches, and hold ourselves accountable through data and transparency.
- **Continuous Improvement:** We cultivate an adaptable learning environment that welcomes all to experiment, make mistakes, build skills and grow.
- **Integrity:** We do what is right, even when it is hard. We model vulnerability and hold ourselves to high standards in the way we work, learn, and interact with one another.
- **Community:** Our people and the community we serve are the beating heart of our institution. We make a positive difference in the lives of our students, community and each other by cultivating meaningful relationships, being inclusive, practicing kindness and promoting active citizenship and civic engagement.

Center for Community & Civic Engagement Vision and Mission

Vision: Working together to inspire individuals to be engaged citizens

Mission: To promote excellence in teaching and learning through civic engagement programs that:

- cultivate service-learning
- collaborate with the community
- develop co-curricular service projects
- encourage civic and servant leadership
- foster social responsibility
- promote personal growth

Integration of Democratic Engagement in Curriculum & Co-Curriculum

Mesa Community College and the Center for Community & Civic Engagement support student leadership and co-curricular events. These events are created to enrich and enhance the students' academic experience at Mesa Community College.

Curriculum Integration

As noted above, Mesa Community College faculty are encouraged to incorporate civic engagement in their curriculum as part of the student learning outcomes. Over the past 3 years, 85 faculty have incorporated service-learning and civic engagement assignments into 571 courses. One of the unique courses that Mesa Community College offers in almost every discipline is an Independent Module Course for 1, 2 and 3 credits where students can be mentored by a faculty on a civic engagement project. Over the last 3 years, 213 independent courses were created at Mesa Community College.

Independent Module – Students have the option to register for a stand-alone service-learning course. This is an academic credit course where the faculty advisor builds assignments based on individual civic engagement experience at the service site. There is no lecture period to attend; however, the student receives a letter grade in this class on their transcript.

In-Course Module – Integration of service-learning projects into existing courses allows students to participate in civic engagement projects as part of the curriculum. This option is an opportunity for students to engage in learning by applying information and skills taught in their course curriculum. Listed below are two of the many courses that incorporate civic engagement projects with a link to more information about the service-learning program.

Political Science – focuses on study topics such as the history of political thought; justice and morality in individuals, society, and government; political and governmental processes; the American political system; legal and constitutional issues; proposals for improving governmental structure and policy; how political behaviors compare in different countries, regions, or time periods; international relations; and practical political problem-solving

Honors Leadership – This course is an interdisciplinary study of leadership focusing on the development of leadership skills involving students in real-world civic engagement projects.

Co-Curricular Integration

Civic Engagement Beyond the Classroom - In March 2020, due to the global pandemic, CCCE presented the opportunity as a team to pivot from traditional in-person student engagement to new virtual experiences built rapidly from the ground up. The department had to continue to provide our students and faculty with high-quality programming in order to achieve the civic engagement student-learning outcome. Therefore, our department created Civic Action Hour, a speaker’s series, and Engage Me, these are workshop that offers additional educational civic engagement training. Starting this Fall 2024, MCC will continue to support and encourage students to apply for the Chancellors’ Civic Leadership Medallion. This program was created to highlight and promote students’ accomplishments related to inspired and effective civic engagement and leadership.

Civic Engagement Beyond the Classroom Goals:

- Support faculty teaching and learning with easily accessible civic engagement assignments for use in their classrooms.
- Foster civically engaged students who make a difference in civic life in one’s community while developing knowledge, skills, values, and motivation to make that difference.
- Provide students with opportunities to gain hands-on experience in civic engagement and service.
- Foster students who are engaged in the community and recognize them for their participation.

Students can earn the Chancellor's Civic Leadership Medallion by demonstrating how they have worked to make a difference in the community, as well as how they have developed the necessary skills to do so effectively. All full and part-time students are eligible to apply. A complete application must be submitted to be considered for the award. Applications should include documentation for the eligible civic leadership activities that took place during the 2024–2025 academic year, as well as a description of the student’s specific role in the activity. Students must also attach an essay reflecting on their year of civic engagement and how this will motivate them in the future. Activities may be in person or virtual.

Civic Action Hour (CAH) implemented in Fall 2020 is a speaker series of online presentations with community partners covering topics that affect our community. During these sessions, attendees (faculty, staff, students, and community members) build community, learn about and share political values, and acquire tools to take action to address problems. Attendance has grown since Fall 2020; we’ve held between 8 to 13 sessions with a minimum of 100 attendees each semester.

Engage Me Workshops are open to students, staff, faculty, and community partners as we offer additional educational training in civic engagement to promote the quality of life in the community through both political and non-political processes. Some of these workshops include:

- **Voter Education Workshop** – This workshop is a non-partisan event during Civic Engagement Week. This workshop teaches potential voters how to register to vote and check their voting history. They also gain knowledge about how to confirm whether their mail-in ballot was received and counted, ensuring that their vote had not been purged. Additionally, they learn how to fact-check statements made by elected officials and candidates. Moreover, they are given the tools to find candidates who best reflect their values. The following is a list of Civic Action Hours and workshops to Educate, Empower and Engage the community.
- **Moderator Training** – Facilitated by a faculty member, this training encourages student interaction to help them discuss difficult issues, learn a new skill set, enhance existing facilitation skills, and incorporate public deliberation into their workgroup, club, committee or community. The students receive a certificate after this training course.
- **Leadership in Politics** – Hosted by Arizona Clean Elections - A leadership development workshop that clarifies how to be a leader in the political world, what it takes to run for public office, and how to get funding for smaller campaigns.
- **Take the Oath** at Support-Defend.org Hosted by founders of Support-Defend.org - Public servants, military members, police officers and even naturalized citizens take an oath to support and defend the Constitution, but most citizens do not. As a part of this presentation, the CCCE offered copies of the Declaration of Independence and US Constitution as well as sample certificates to those who took the Oath virtually on their website.
- **Other** workshops are hosted by professional speakers or faculty.

Community and National Collaboration & Partnership

Local and National Partnerships

The college has collaborated with community and national partners. The benefits of these collaborations include; increasing creativity and out of the box thinking, additional flexibility in events and activities, advanced learning possibilities, and opportunities to improve voter education and registration.

- Maricopa County
- Citizens Clean Elections Commission
- The Andrew Goodman Foundation
- Campus Election Engagement Project
- All IN Campus Democracy Challenge
- Campus Vote Project
- Ask Every Student

Landscape

As noted above, the Campus Democratic Engagement Action Plan is administered under the direction of the Center for Community & Civic Engagement at Mesa Community College. Mesa Community College serves 30,000+ students enrolled at our two comprehensive campuses, Southern & Dobson and Red Mountain, and other satellite locations including the Downtown Center and online programs. For over 30 years, civic engagement and service-learning have been standard features of the Mesa Community College landscape. Accordingly, the CCCE has set a goal of encouraging active participation for all students in the election process of the community. MCC demographics are reared as 45% male and 53% female (collegetuitioncompare.com). Other race/ethnicity categories featured at MCC include Asian, Black, Native American, and Pacific Islanders. The college also hosts more than 400 international students representing over 60 countries.

MCC's overall approach to voter registration has been successful. This approach includes registration drives, National Voter Registration Day events, and voter education seminars to name a few. According to the 2014 & 2018 & 2022 NSLVE Report, Student Voting Rates for Mesa Community College, the MCC registration and voting rates are rising. Early voting is by far the most popular method of casting a ballot among the student population. The goal is to continue this upward trajectory despite setbacks presented by the COVID-19 shutdown. To assist in this endeavor, the college is using the information found in our NSLVE report to identify underrepresented groups and segments of the community who appear to lag in full voter participation.

The 2022 NSLVE showed our institution had a .5 positive chance compared to our 2018 report; bringing us to a 34.4% voting rate compared to all institutions who average about 30.6%. MCC's voter registration numbers have been impacted by the decrease of student enrollment due to the pandemic. Based on the NSLVE data in page 9, we have a 77% increase for voting early. Consequently, for this fall 2024 fall semester, CCCE will have a handful of events to promote voter registration deadline by October 7th. Along with promoting classroom presentations and provide students with the resources needed to be educated voters. Both the Southern & Dobson and Red Mountain Campuses will be polling locations for the general elections, this will make it easier for students to vote while being on campus.

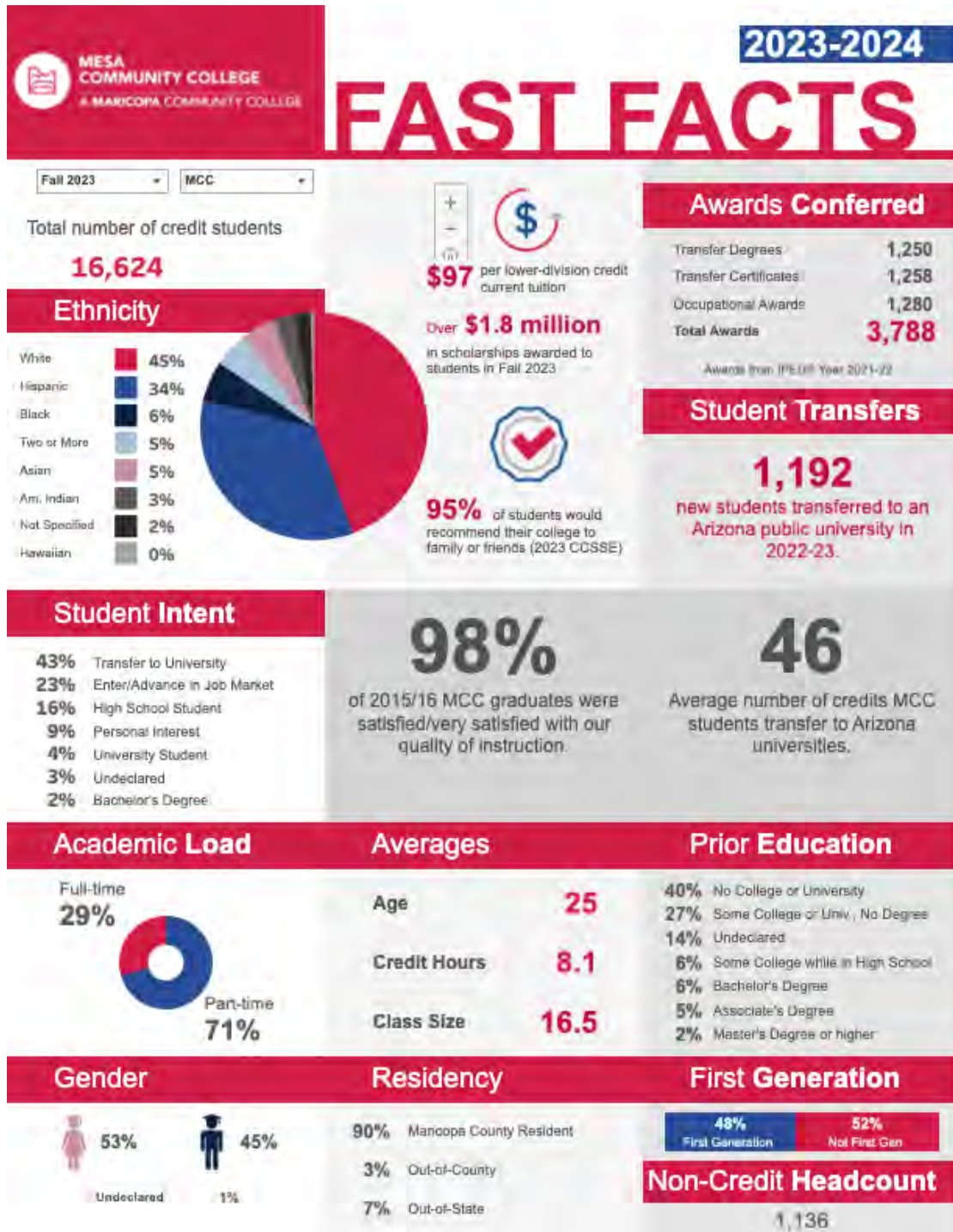
MCCCD promotes voter registration via an annual notifications and posts on our canvas page. Voter Registration Annual Notification: MCCCD encourages you to be a registered voter and exercise your right to vote in state and federal elections. This notification provides information regarding how to register to vote and the ways you can get involved in the election process. In the following weeks the new appointed Andrew Goodman Foundation Ambassadors will submit their Action Plan to increase civic engagement and voter participation on both campuses.

The college is committed to becoming better at coordinating with instructors to plan events around class schedules and tailoring topics to align with course competencies. Some activities planned for the upcoming semesters include student drop-ins and pop-up registration events. Elected officials will also visit the campus regularly in order to participate in panel discussions and to serve as keynote speakers during issues forums.

Voter education workshops will also be scheduled; emphasis will be on barriers that our target audiences face. Some of the barriers include; a lack of information as to when and where voting occurs, how to register, and lack of knowledge as to what or whom to vote for. In the past, this approach resulted in growth in voter participation in every age category, particularly among segments of the target groups, one of whom showed an increase in voter turnout.

While there have been several state elections laws that have changed or have been implemented in the last legislative session (e.g. SB1072, SB1090, SB1054), there have not been any that have yet adversely affected the college. With the recent changes in Arizona with Voter Registration guidelines, our campus will ensure to provide students with the proper resources to be registered to vote. One lesson learned from the past includes an increased awareness of and need for a larger talent pool of committed community partners and those within our institutional infrastructure who are willing to support the college goals in reaching every student. Future barriers to be addressed will be a lack of interest in voting, the perception that a single vote does not count, and the inability to access reliable and trusted news sources.

Figure 1 Fast Facts 2023-2024 Mesa Community College



Goals

Voter Engagement Plan and Goals

Our goals to continue to increase NSLVE registration and voting rates for the 2023-2024 academic year include a strategy that will connect to professor-led activities and enrichment opportunities offered as part of the classroom curriculum created to increase civic engagement activity. These activities are currently being developed, as an Ask Every Student CoDesigner project. Our attendance goal for the 2024-2024 academic year is to increase the attendance for in-person events by at least 15 percent and online events by 20 percent. This will be done by rewarding students who use motivate.

This plan will be administered at MCC's Southern & Dobson and Red Mountain Campuses under the direction of the Center of Community & Civic Engagement (CCCE) in partnership with a variety of internal and external constituents. Our college plan and how we intend to carry it out consists of the following:

Voter Registration

- At the beginning of the semester, a welcome email will be sent from the administration with voter registration eligibility and deadlines included.
- Welcome Week/Ongoing Tabling – by ASMCC, CCCE, and various clubs.
- Registration information will be provided at Enrollment Center.
- Student Life and Leadership and the CCCE will offer various opportunities for students or register to vote.
- Civic Holidays and Constitution Week – Voter registration links will be shared with the student body. Activities designed to encourage student registration and voter participation.
- Civic Action Hour – Topics are selected that relate to civic engagement, the importance of voting highlighted, and voter registration links shared with students.
- National Voter Registration Day – Workshops and speakers encourage voter participation and civic engagement while voter registration links are disseminated.
- Engage Me Workshops- During the semester, some of the workshops will be about the importance of voting.
- Reach out to Department Chairs to provide the options of sharing Voter Engagement resources or for CCCE to present at their department meetings about the voter engagements plans.

Voter Education

- CCCE offers links on its webpage to the voting registration sites
- The Democracy Commitment – MCC is a participating campus with this nonpartisan initiative to prepare students to actively participate in our democracy.

- Institutional Advancement helps to share information about various events, dates, etc. on all campus social media sites.
- Information about various events relating to voter education is shared online via the MCC Intranet as well as Facebook, Instagram, and other advertising venues, e.g. posters, fliers, etc.
- Partnerships with faculty and community members provide information to students about the importance of voting via Civic Action Hour and other related events.
- MCC is an Andrew Goodman Foundation site. Students receive training from this organization to provide information to students regarding the importance of voting, voter education, and civic engagement, etc.
- Chancellor's Civic Medallion – Many activities available to get students engaged!

Short Term Goals

1. Assemble a team of new and diverse student leaders by September 2024
 - a. 2 - Andrew Goodman Ambassadors
 - b. 2 to 4 - Campus Election Engagement Project Civic Influencers
 - c. 2 to 4 - Campus vote Project Democracy Fellows
 - d. 2 to 4 - Campus Vote Project's Poll Worker Project fellows
2. Plan 3-9 activities for the fall and spring semester that are open to all students with a focus on students that traditionally have lower voter participation.
3. Develop 3 curriculum modules that foster democratic engagement that may be easily inserted into courses by fall semester.
4. Organize 3 campus wide virtual events for the spring semester that focus on civic and voter education including National Voter Registration.
5. Provide greater opportunities for voter education by organizing weekly informational booths in high traffic areas.
6. Add an additional 3-4 new community partners to the campus coalition.
7. Organize 3-4 events at the Red Mountain Campus that encourage students to use the on campus polling site.
8. Have at least a 15% increase in both registration and voting rates during this election cycle based on the NSLVE Report.
9. Participate 100% in the Ask Every Student project and implement the projects by the end of the fall semester.
10. Assist in recruiting 10-15 students to serve as poll workers on Election Day. Email sent at the beginning of Fall 2024 semester to all students from Student Body President (ASMCC) and MCC Student organization, urging students to vote and providing them with information regarding voter registration and other information.

11. Voting Resources website updated as a component of the Center for Community & Civic Engagement page to provide students with a comprehensive source of voting information including: buttons and links to the Recorder’s website, BeBallotReady, VoteSmart.org, MCC Library’s voting guide, National Study of Learning, Voting, and Engagement (NSLVE) reports, Arizona.vote, Campus Democratic Engagement Plan, Maricopa County Elections Department, important dates and other voter information. This site will disseminate information including deadlines for registration and delivering ballots by mail as well as links to voter registration websites.

12. Reach out to Athletic Department to encourage athletic to participate in our Civic Holidays.

Long Term Goals

1. We will continue to be a polling location for both campuses in 2024.
2. Incorporate voter registrations into student orientations by 2024 election.
3. Include voter registration as part of the college registration process by 2024 election.
4. Create voter education module to be included in all courses educating students on the importance of voting and being engaged citizens.
5. Partnering with Campus Vote Project to bring presentations about voter education to classrooms.
6. Increase voter participation rate of students in age groups 18-21, and 26-29 to at least 70% participation by the 2024 election.
7. Achieve 100% student voter participation of students at MCC by the 2028 election.

Strategy

An important part of our strategy includes a robust program of continuing education and leadership training in programs that assist us in carrying out our duties in promoting voter education and engagement. This includes gaining proficiency in programs such as: WebEx, and Zoom. These programs allow us to offer the best online or virtual experience possible to our students during this COVID era of education.

Other short-term tactics include collaborating with the District in order to increase the voter engagement and education activities such as Our Vote. Our Future and partners such as Campus Compact and their Facilitating Online Deliberative Dialogues. The college will encourage all faculty to incorporate student learning outcomes into their courses. This action plan will encourage civic engagement as the outcome to be embedded into the courses. The college will continue to monitor the increase in involvement throughout the coming year. In the meantime, the college will support and devise programs that are informed by the college’s data as well as the data provided by the NSLVE report. Utilizing this information, the college strategy will be to determine which segments of the student population need the most support and encouragement.

Working with the diverse student organizations, student government, and faculty allies, the college will continue to plan activities that draw the attention of MCC community members. For example, a movie night co-sponsored with a special interest club will provide a valuable and useful vehicle or tools that will educate students as to the importance of voting and becoming civically engaged. It would also be beneficial to tap into the older demographic in order to find volunteers who might serve as mentors to students in the younger, less active age categories.

The Center for Community & Civic Engagement will utilize our Federal Student Workers (FSW) to raise awareness of government functions and resources and increase civic participation. FSW will have access to Deputy Registrar training and will attend the events to assist with voter registrations. The FWS will be able to assist students to the many websites for registering to vote or to update their voter registrations. The FWS will also be able to attend additional clubs and student organizations to provide Voter Registrations forms. There are added bonuses for FWS to work with our National and community partners that include but are not limited to Arizona Clean Elections Commission and Maricopa County Elections Department at our many Voter Registrations events such as AZ Statehood, Your Vote, Your Voice, Get the Vote Out, etc. During Election years, the Maricopa County Elections Department has many opportunities for students to get involved in the elections by becoming and Student Election Clerk.

In addition, Mesa Community College's First Year Experience program (FYE), a supportive yearlong engagement with first year college students, focused on providing first-year students with the services and support needed to successfully transition to MCC. Introduce not only will voter education and registration to the first-year students, but also the many civic engagement events and workshops, such as, Civic Action Hour, Engage Me Workshops and the Chancellor's Civic Medallion.

These strategies will see to make civic learning and democratic engagement as an established part of the curriculum and co-curriculum. Furthermore, courses throughout the institution include the Political and Social Science courses to incorporate student learning outcomes for civic engagement and learning outcomes for democratic engagement.

Multiple voter registration engagement and education activities will be planned by team members during weekly meetings and then coordinated via email and texts. The college will involve staff more fully in student organization meetings and student government activities. These activities will include pop-up registration drives, voter education seminars, and deliberative dialogues. Promotions is another tactic that will be utilized more fully. This will include the design and printing of notices to be posted around campus. Announcements and updates pertaining to upcoming events will be made in student government meetings, as well as being posted on the employee intranet. Announcements will also be posted on the campus electronic bulletin board, in the school newspaper, and via posters and flyers that have been placed strategically around campus.

Lastly, as suggested by Campus Vote Project and the NAACP, we strive to address our approach by improving administrative support for campus work, establishing sympathetic relationships with local elected officials and to improve avenues of information and communications with students. See: HBCU Roundtable Insights Brief, (Campus Vote Project), August 2020. In reaching our underserved student population, we strive to provide reliable media information through the Educate My Vote initiative. This program features daily briefs on where to go for reliable information regarding voting, the election, candidates, and propositions. We are also planning readers’ polls designed to encourage research into current events.

This upcoming fall, students will have access to a library display on Civic Engagement content. Through our advertisement and tabling events, CCCE will be encouraging students to visit the display.

NSLVE

National Study of Learning, Voting, and Engagement

During the upcoming 2024 Election cycle, the NSLVE report will be utilized to determine which pocket groups have been underrepresented or are lagging in voter participation. When used in tandem with other sources of feedback, the report will serve as a powerful tool in directing the plans and activities of the college. Thanks to this report, we have identified several underrepresented target groups and plan to address discrepancies as outlined elsewhere in this report under goals.

	2014			2018			2020			2022			2018-2022 Change
	Enrolled	Voted	Rate (%)	Enrolled	Voted	Rate (%)	Enrolled	Voted	Rate (%)	Enrolled	Voted	Rate (%)	
Female	-	-	-	6,840	2,390	34	5,928	3,538	59	6,121	2,080	33	➡ 0
Male	-	-	-	6,309	1,971	31	4,668	2,714	58	5,019	1,691	33	⬆ 2

Planning voter education and registration events or any campus/community event, using the NSLVE Report section “Looking Closer by Sex” will assist in focusing on students making sure they are aware of the information available to them and all students.

Contact with the following clubs or student organizations such as Aliento, American Asian Pacific Islander Coalition, Black Student Union, M.E.N. Male Empowerment Network, Women Rising etc. will be notified about the many opportunities to participate in campus and community events and getting involved in voter education and registration.

By Age Group

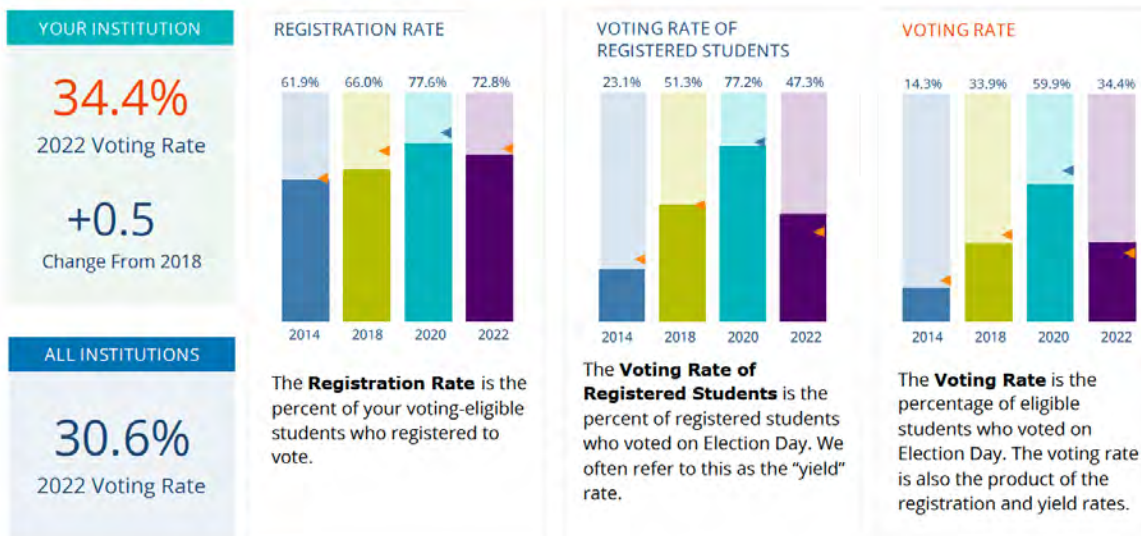
	2014	2018	2020	2022
18-21	10%	34%	65%	31%
22-24	11%	26%	54%	34%
25-29	10%	30%	48%	28%
30-39	15%	32%	51%	31%
40-49	26%	44%	62%	41%
50+	45%	62%	70%	64%

While In Past, we have seen voting rates increase across groups, in recent cycles, the most significant increases have been among first time and youngest voters. Some colleges serve primarily young students, traditionally viewed as students in the 18-21 or 22-24 categories here. Others have much higher numbers of enrolled older undergraduate or graduate students.

The data from the 2022 NSLVE shows a decrease in Voting, Registration, and Yield rates compared to 2020. Based on all institutions voting rate of 30.6%, MCC has a rate of 34.5%.

Our goals to increase NSLVE registration and voting rates for the 2024-2025 academic year include a strategy that will connect to professor-led activities and enrichment opportunities offered as part of the classroom curriculum created to increase civic engagement activity. These activities are currently being developed as an Ask Every Student CoDesigner project.

Voting, Registration and Yield Rates



Strategy

2023-2024 Civic Engagement Events

Civic Engagement Event	Who will Implement this event	What is the Purpose	Where will this happen	When will it happen
Weekly Planning meetings	CCCE	Implement action plans and create marketing material for events.	online	Every Friday
Welcome Week	CCCE & Student Leadership team	To recruit campus leaders, promote voter education and registration.	Online and MCC Courtyard	Aug 2024
Voter Registration	CCCE and various community partners	To promote voter registration.	Online and Weekly in MCC courtyard	Weekly starting the first week of the semester
VolunteerFest	CCCE	To support call serve-learning, volunteerism and voter registration.	Southern & Dobson Campus Navajo Room	Sept 2024
VolunteerFest	CCCE	To promote service-learning, volunteerism and voter education and registration.	Red Mountain Courtyard	Sept. 2024
Constitution Week	MCCCD	To educate Students about the Constitution and Civic Engagement.	Webex Online	Sept. 2024
AZ Vote Summit	CCCE & Campus Vote Project	Host the AZ summit to bring speakers, resources, and workshops.	Southern & Dobson	Sept. 2024
National Voter Registration Day	CCCE and various community partners	To promote voter registration and education.	Southern & Dobson & Red Mountain Campus	Sept 2024
National Voter Education Week	CCCE and various community partners	To promote voter registration and education..	Southern & Dobson & Red Mountain Campus	Oct. 2024
Monday Morning Chats	CCCE	Engage students in conversations about Civic Action Hours and Voting.	Southern & Dobson & Red Mountain Campus	8 Fall Sessions

Vote Early Day	CCCE and various community partners	To promote voter education and registration and make a plan to vote.	Southern & Dobson & Red Mountain Campus	Oct. 2024
Election Hero Day	CCCE and various community partners	To promote voter education and registration; engagement and to get out the vote	Southern & Dobson & Red Mountain Campus	Oct. 2024
End of the Semester Celebration	Staff	To thank and celebrate the work that all the staff and students have done to implement the Action Plan	MCC Southern and Dobson Campus	Dec. 2024
Weekly Planning meetings	CCCE	Implement action plans and create marketing material for events	Online Google meets	Mondays at 10:00 am
Welcome Week	CCCE & Student Leadership team	To promote voter education and registration and civic engagement activities	Online and MCC Courtyard	Jan. 2025
Voter Registration	MCC VOTES TEAM	To promote voter education and registration	Online and Weekly in MCC courtyard	Weekly starting Jan 2025
VolunteerFest	CCCE	To support class service- learning opportunities , volunteerism and voter education and registration	Southern & Dobson Campus Navajo room	Feb. 2025
VolunteerFest	CCCE	To promote service-learning, volunteerism and voter education and registration	Red Mountain Courtyard	Feb.2025
Civic Engagement Week	CCCE	To promote civic engagement awareness and voter education and registration	Southern & Dobson & Red Mountain Campus	Feb. 2025
Former Members of Congress Visit	CCE	Town Hall to speak on elections and the importance of voting with former members of congress.	Southern & Dobson & Red Mountain Campus	Feb. 2025
Pay it Forward	CCCE and FWS	Special events to expand students views on helping other people in the community	Southern & Dobson & Red Mountain Campus	Biweekly starting Jan 2025.
Voting Registration	AGF	AGF Ambassadors will table weekly to promote voting registration on campus	Southern & Dobson Campus	Starting January 2025.
End of the Semester Celebration	Staff	To thank and celebrate the work that the staff and students have done to implement the Action Plan	MCC Southern and Dobson Campus	May 2025

Civic Action Hour- Tuesdays from 12:00pm to 1:15pm. As part of our ongoing strategy plan for voter education and civic engagement, we are hosting a weekly speakers' series centered on relevant topics and workshops.

Date	Topic	Speaker	Description
Sept. 10	Self-Advocacy	Ability Maricopa, DRS, Student	TBA
Sept. 17	Young People in Elected Offices	Gen Z in Government	Awareness and Resources
Sept. 24	Housing Matters: Know Your Rights	AZ Housing Coalition	TBA
Oct. 1	The Role of Foreign Policies in the U.S Elections	Dr. Brian Dille	Awareness and Resources
Oct. 8	Propositions Overview	Dr. Brian Dille	Awareness and Resources
Oct. 15	Immigration; Know Your Rights	TBA	Awareness and Resources
Oct. 22	Domestic Violence	Lynn Spillers- ACASI	Awareness and Resources
Oct. 29	AI Impact in Democracy	TBA	Awareness and Resources

Workshops - The workshops are open to students, staff, faculty, and community partners as we offer additional educational training in civic engagement to promote the quality of life in the community through both political and non-political processes.

Date	Topic	Speaker	Description
Sep. 17	Mesa Public Schools Forum	MPS Candidates and Ed-Rising	Candidates will be asked questions by Ed Rising students.
Oct. 3	Monarch Tagging	Southwest Monarch	Education on the Monarch Waystations and teach students how to track them.
Oct. 9	Keep it Local: Deciphering Your Ballot Choices	AZ Clean Elections	Voter Information: Learn how to research a ballot.
Oct 13	AZ Town Hall	Dr. Brian Dille	Have a chance to learn and share your solutions to problems in the community.
Oct. 13	Voter Mural	CCCE Federal Work Study	A chance for students to express their arts skills about voting!
Nov. 13	How to have healthy conversations after elections	CCCE & counseling staff	TBA

Reporting

The college will continue to post the Campus Democratic Engagement Action Plan on the CCCE website to ensure transparency via a document that is both accessible and searchable. This document will also be shared internally and externally. Internally, the plan will go to MCC’s administration, Faculty Senate, and Student Government. It will also be on file with the Maricopa County Community Colleges District to prove compliance with state and federal laws pertaining to student voting. Externally, it will be shared with entities such as Campus Compact and ALL-IN.

Throughout the yearly school cycle, the plan will be updated in real-time to ensure that both the long- and short-term goals are being achieved. The college will also be tracking registration efforts and checking the voter turnout rates during each election cycle. This data will be used as a documentation source for other civic engagement reports including those for the Andrew Goodman Foundation, ALL-IN Campus Democracy Challenge, Campus Vote Project, NASPA, and Carnegie designations.

MCC’s Campus Democratic Engagement Action Plan is also shared publicly with the Maricopa County Community College District for dual use as our District Voter Registration Plan. State law requires this document outlines our student outreach *as per* Arizona state statute and ensures that we are in compliance with requirements under that statute as we implement our student outreach, partnership formations and efforts to promote voter engagement.

Evaluation

As part of our scheduled activities, attendance is taken and students are asked to fill out a survey and offer feedback. This data is utilized to evaluate the effectiveness of various activities and programs. Additionally, the Office of Institutional Effectiveness regularly collects data from faculty who assess their students. This data is compiled and analyzed to measure past successes in order to strategically plan and improve student learning. This is done so that the faculty can improve their teaching and the college is better able to design activities and events that can easily be woven into student learning outcomes. The data below is from the Mesa Community College Program to Assess Student Learning 2022 and shows the process for infusing assessment into the courses.

Civic Engagement Results

Table 9 shows the college-wide Civic Engagement learning outcome score for AY 2021-2022.

In calculating the average score, blanks were given a score of zero. Therefore, the average score is on a scale of 0 to 4, with four being the highest level of achievement.

Table 9

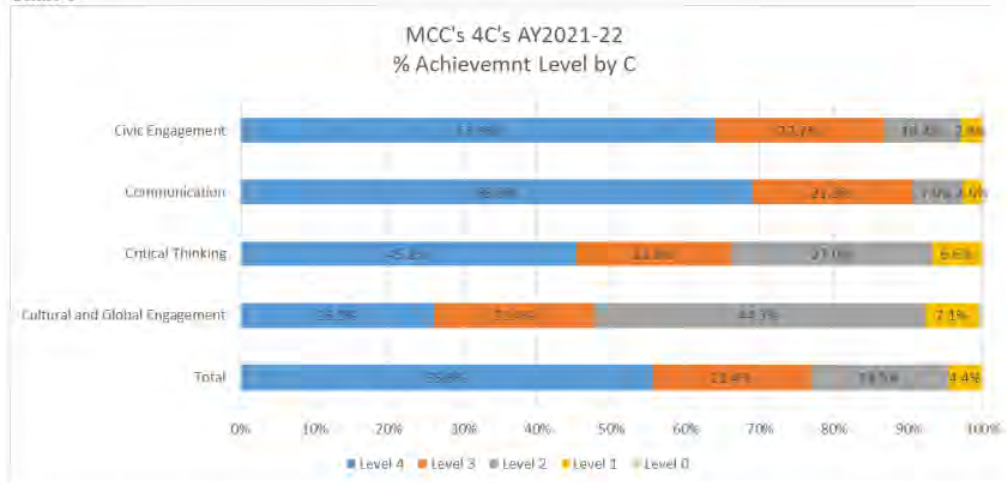
AY 2021-2022 - Assessment – All Locations			
Learning Outcome	# of Students	# of Assessments	Average Score
Civic Engagement	442	449	3.47

The Center for Community & Civic Engagement and the MCC Votes Team regularly evaluate the success of co-curricular programs by taking time to do a plus/delta after each event. This data is used to inform and strengthen future planning of events sponsored by the Center for Community & Civic Engagement. While the college is unable to track some aspects of the efforts due to online services, such as voter registration, the use of the NSLVE data helps support programing and is used to make improvements in recruitment and marketing for events. From the NSLVE report, the college can better understand student behaviors during an election cycle including student voting rates, comparisons of student voting by gender, age, and future vocations. NSLVE reports are used regularly and posted permanently on the CCCE website.

This report is also sent to all campus administrators and college faculty challenging them to use this data to strengthen civic engagement involvement. The charts below show the data used to help support programs and events of the MCC Votes Team and are used to set goals for the Campus Democratic Engagement Action Plan.

Chart 1 shows the percentage of assessment scores for each Level by MCC's 4C.

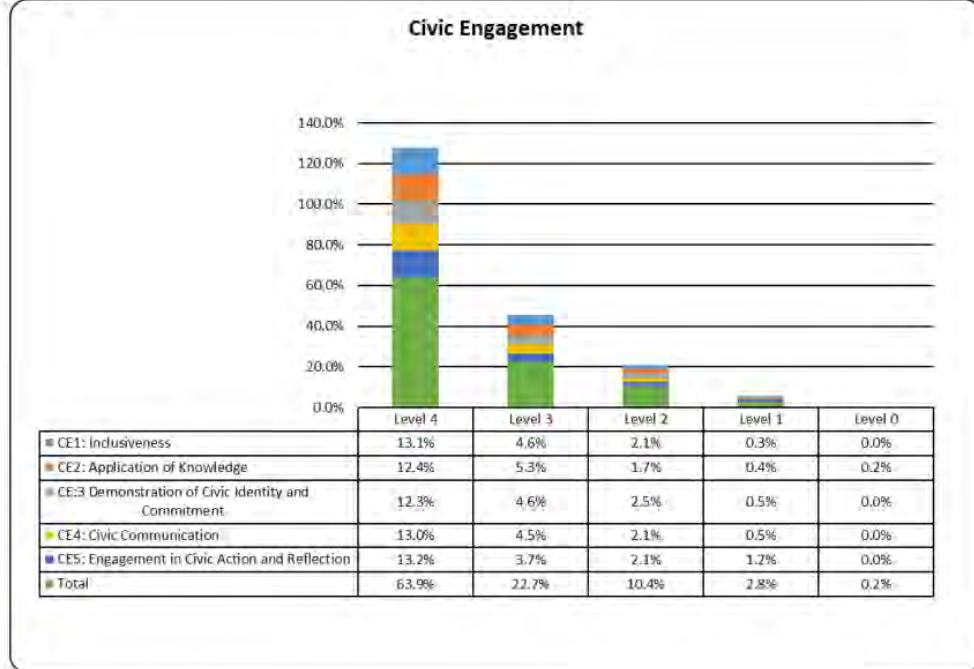
Chart 1



- 63.9% of Civic Engagement assessments were rated at Level 4
- 69.0% of Communication assessments were rated at Level 4
- 45.2% of Critical Thinking assessments were rated at Level 4
- 26.1% of Cultural and Global Engagement assessments were rated at Level 4
- Total of 55.5% of all MCC's 4C's assessments were rated level 4

Chart 2 shows the percentage of students scoring at each Level per descriptor.

Chart 2



- 86.6% of Civic Engagement assessments were rated at Level 4 or Level 3
- CE5: Engagement in Civic Action and Reflection, assessed more students at Level 4 (13.2%) than the other descriptors assessing at any other Level
- All descriptors assessed most student assessments at a Level 4

Appendix A

Chancellor’s Civic Medallion

Sample Activities - In order to be eligible, you **must attain at least 100%** in any category (or a combination).

Experiential Learning	
Successful completion of the Student Public Policy Forum.	50%
Participation in Model UN.	30%
Participation in Speech/Debate.	30%
Participation in the 3-day Arizona Town Hall.	20%
Participation in an Arizona Town Hall 1-day event – community town hall, future leaders town hall.	10%
Successful completion of Moderator Training.	10%
Serving as a moderator at a campus/community event.	15%
Successful completion (C or better) of a POS 110, 230, 222, 221 or 285 course. If currently enrolled, please include a note from your instructor regarding your status/grade.	15%
Attending a community meeting/civic event (City Council meeting, public hearing, school board meeting, etc.).	5% per occurrence 25% maximum
Volunteerism	
Successful completion (C or better) of service learning 282 course. If currently enrolled, please include a note from your instructor regarding your status/grade.	25%
Hours of service – volunteering at a food bank, polling station, service learning, school, political campaign, etc.	1% per hour of service
Leadership	
Serving as an officer in student government for an academic year.	50%
Serving as an officer in a student club.	25%
Organizing and leading a community event – voter registration drive, food drive, etc.	25%
Organizing and leading a campus event – voter registration drive, food drive, etc	20%
Running for public office.	25%
Serving in public office.	50%

The Maricopa Community Colleges are EEO/AA Institutions.

Appendix B

Addressing ARS § 15-1895 at Mesa Community College

Arizona Revised Statutes (ARS) § 15-1895 requires each community college district, in consultation with the recognized student government at a community college under its jurisdiction, to adopt a plan to increase student voter registration and voting.

MCC's plan to address ARS § 15-1895:

15-1895. Voting information; postsecondary students

The Arizona board of regents in consultation with the recognized student government of the universities under its jurisdiction and each community college district governing board in consultation with the recognized student government at a community college under its jurisdiction shall adopt a plan to increase student voter registration and voting in elections that includes:

1. Information about on-campus voter registration and voting opportunities made available in at least one of the following methods:

- During new student orientation. During the new student orientation, each student is provided with a Student Handbook that contains information on voter registration both in-person and online. See p. 16 of the Student Handbook. Additionally, a PowerPoint slide that lists links to registration and information sites was provided to be included as part of the online orientation.
- During the issuance of student identification cards. Voter registration materials will be made available at the ID station following a lifting of COVID restrictions.
- (c) In admissions packets. The registration office offers registration forms in the counter area.

Also, voter registration information including access to voter registration links and information are posted on MCC's Homepage under "Student Resources" and on both the Current Students' and Future Students' webpages together with a link to our department's website and Mesa Votes page.

2. Voter registration materials at central campus locations and high traffic areas.

Registration materials are readily available at the Kirk Center, the Courtyard, the Library, the Center for Community & Civic Engagement (CCCE) and online both at on the MCC homepage and the CCCE website, Mesa Votes, as listed above.

3. Broad dissemination of information regarding:

- Voter registration deadlines.
- Deadlines for delivering ballots by mail.

